

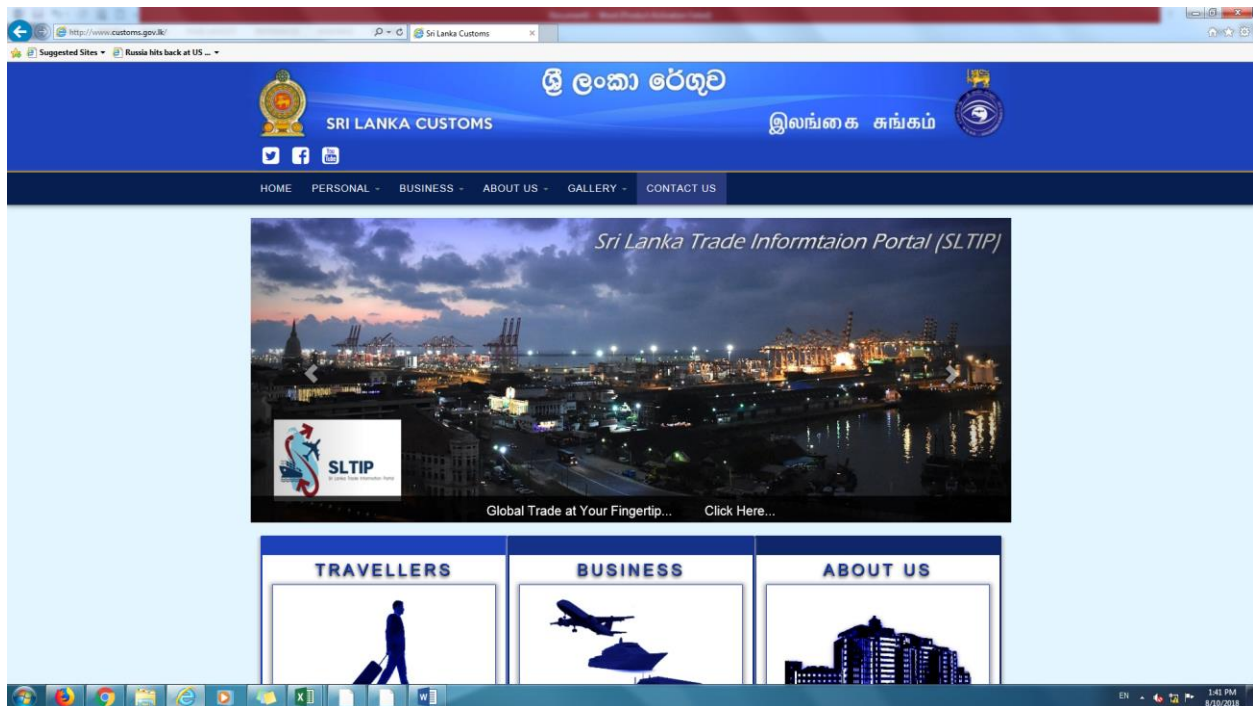
HOW TO CONNECT TO THE ASYCUDA WORLD SYSTEM THROUGH THE INTERNET (DIRECT LINK-WITHOUT VPN)

What you need

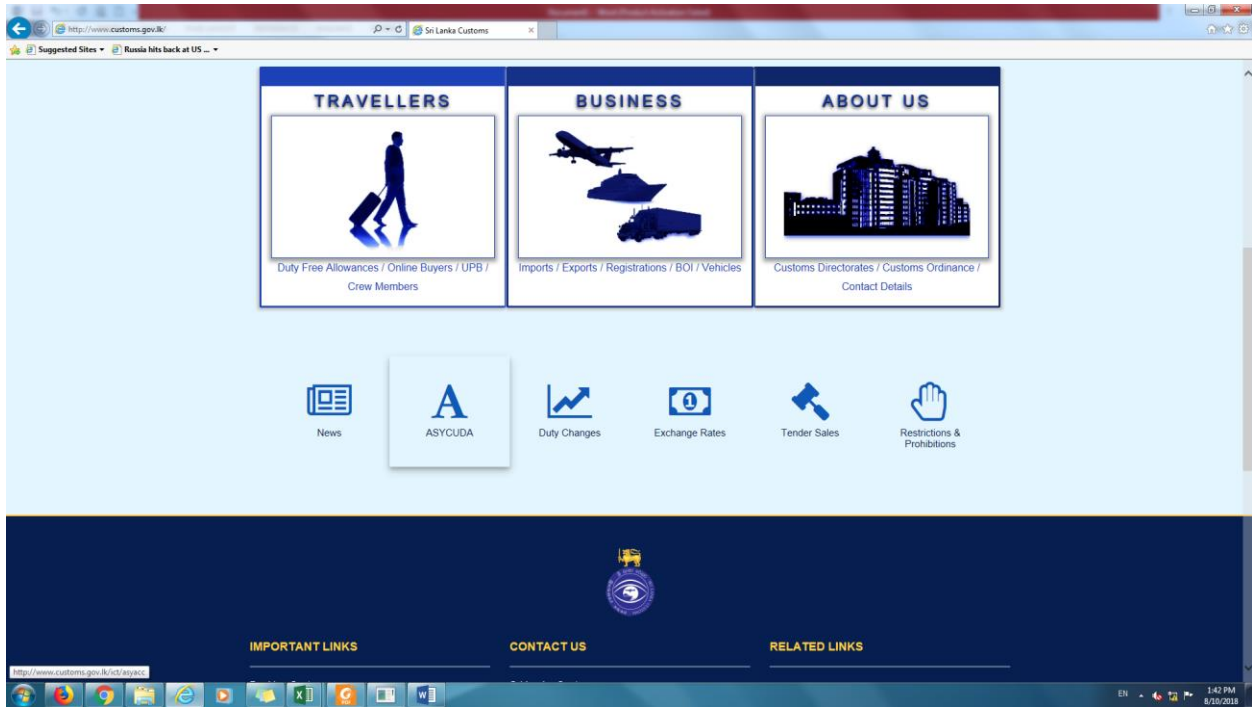
A Personal Computer or a Laptop with an Internet Connection

Step 1

Open the internet explorer and go to the customs website www.customs.gov.lk

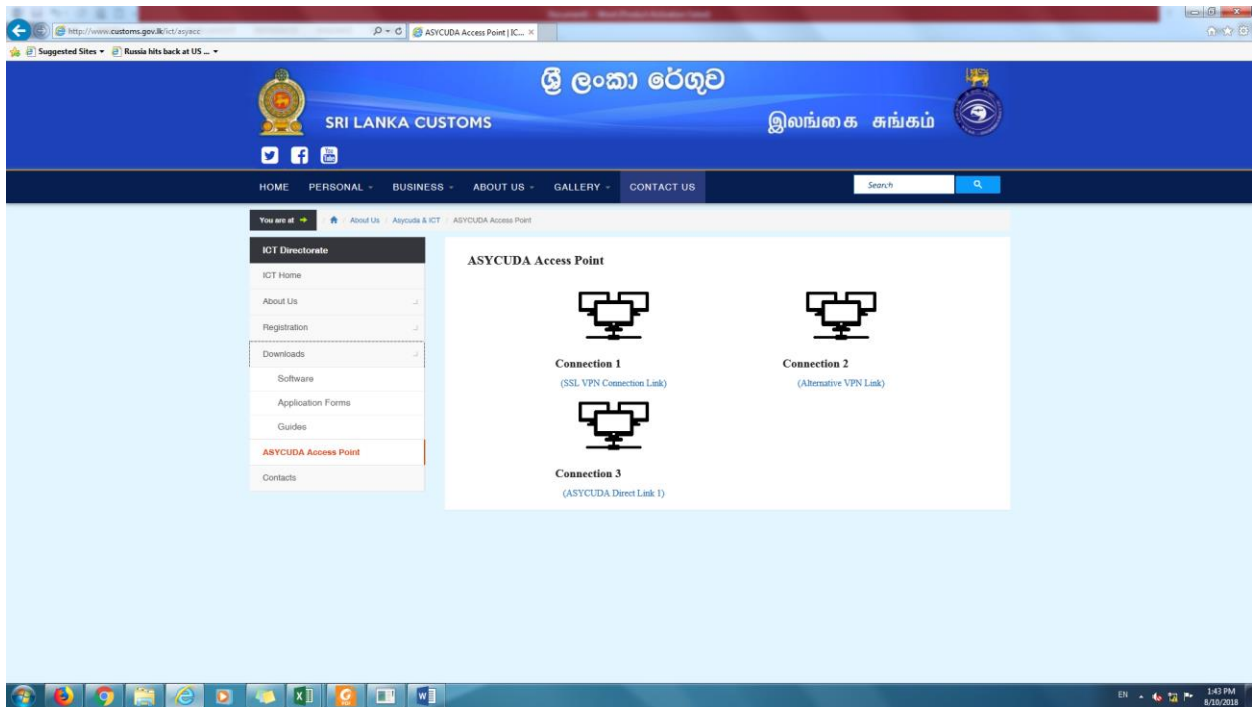


Click on the big "A" button at the bottom

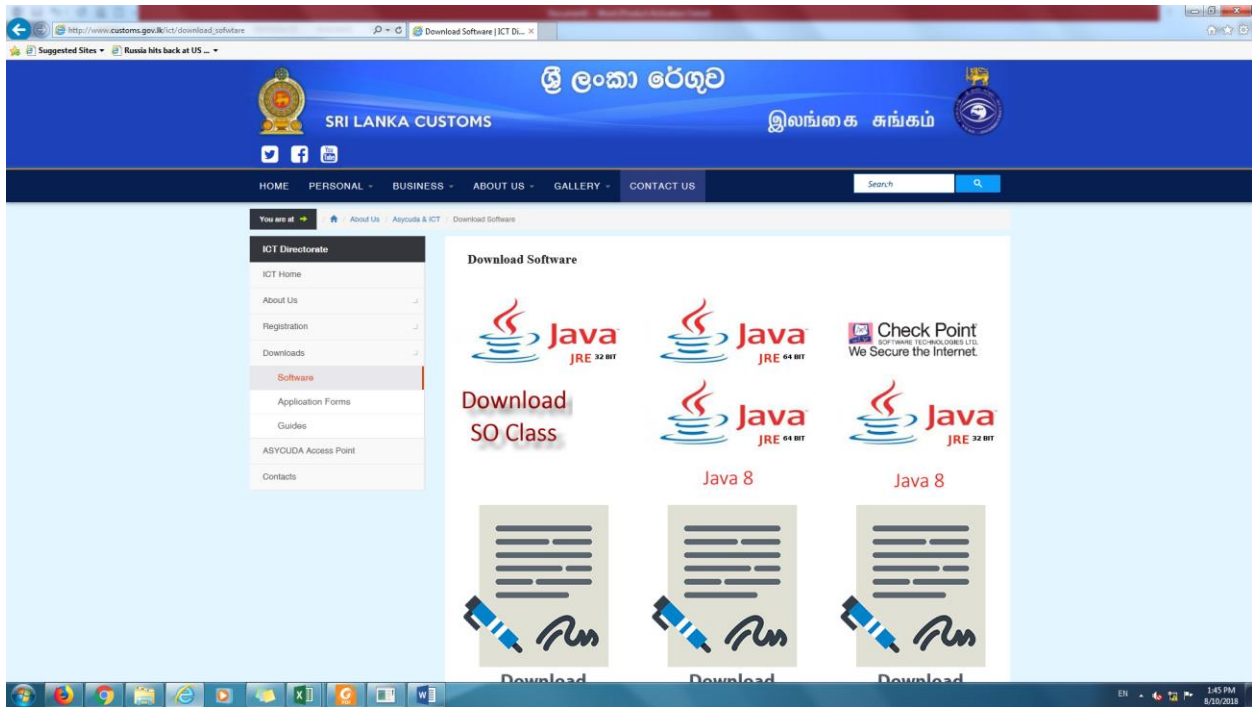


If you have java 6 update 17 installed in your machine skip the following steps and jump to **Step 2**

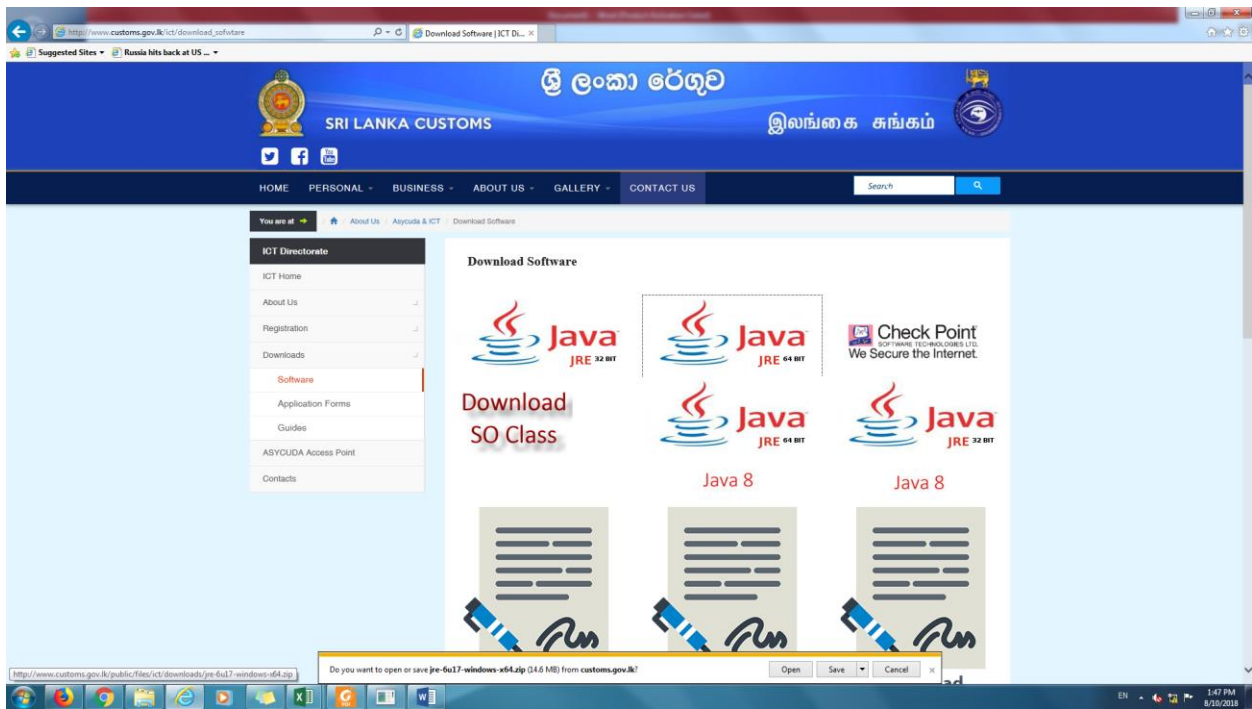
Click "Downloads" link at the left



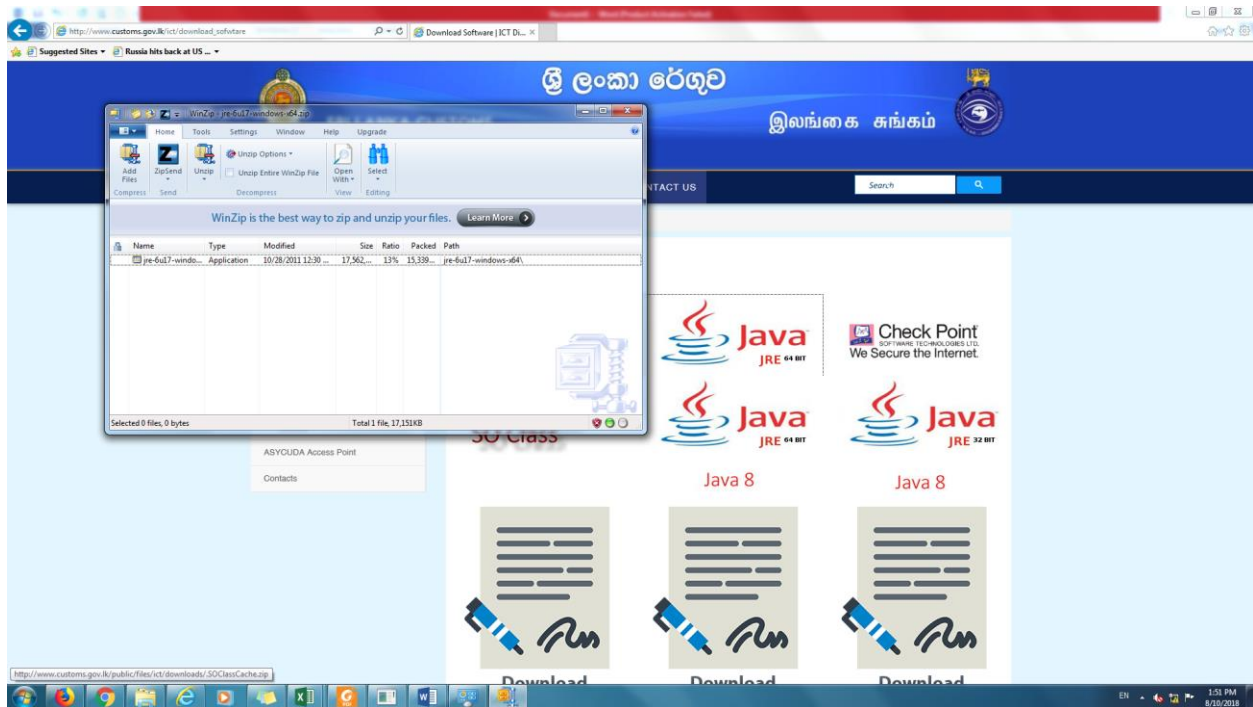
Click "Software" under Download



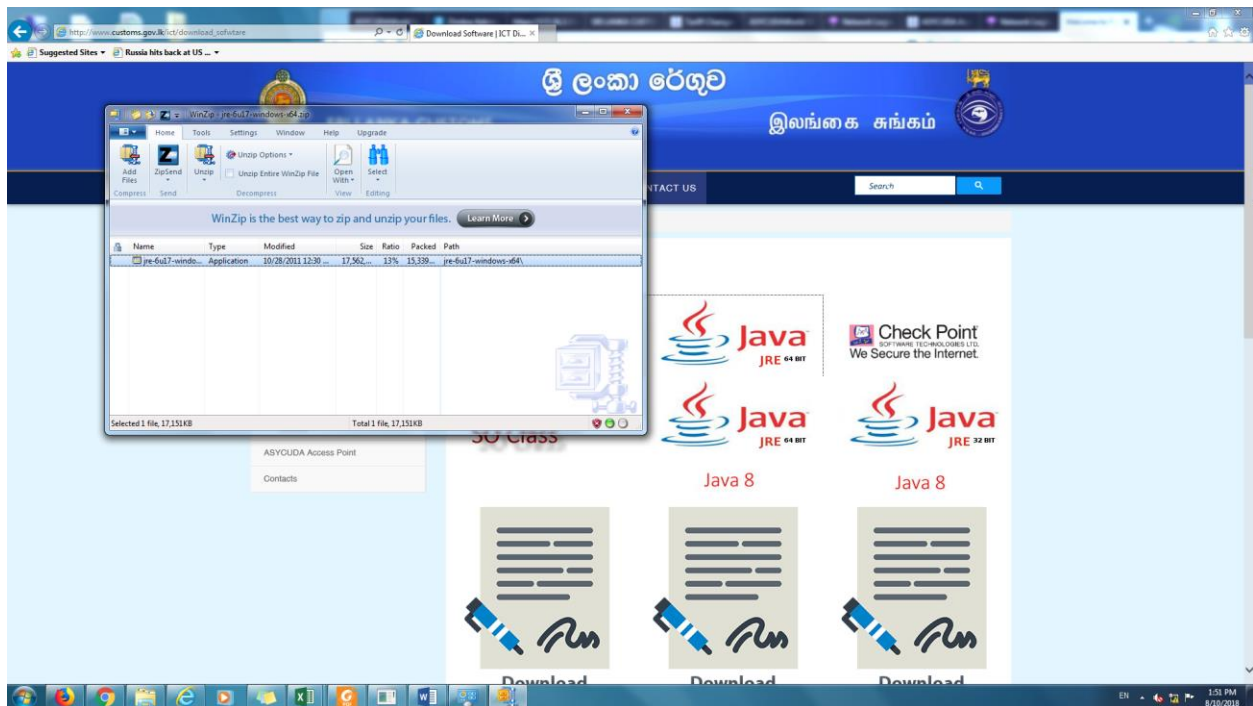
Click the 1st java icon or the 2nd java icon depending on your operating system(32 bit or 64 bit)



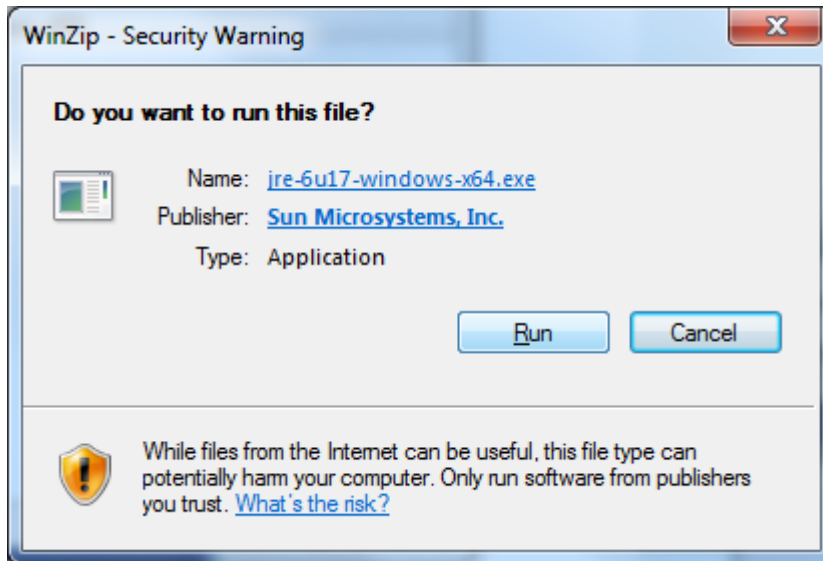
Click the open button in the yellow pop up window at the bottom



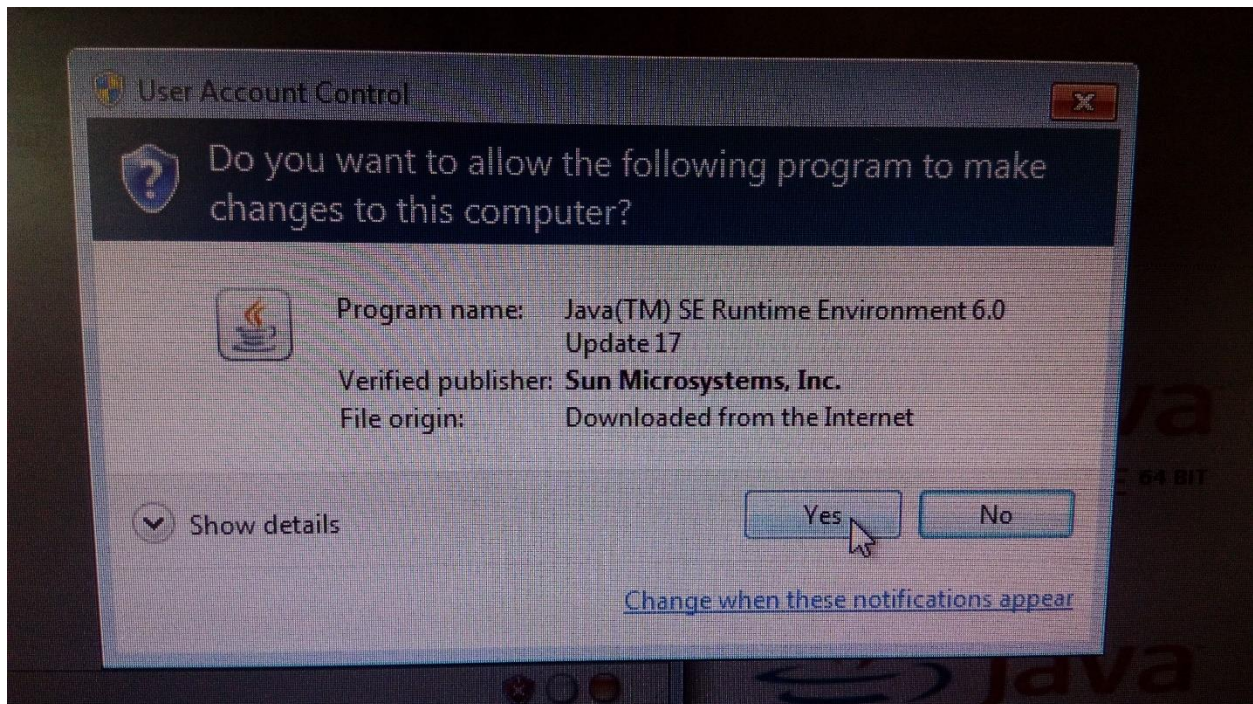
Double Click the “jre-6u17-...” file inside the window



Click “Run” in the pop up window



Click "Yes" in the next pop up window



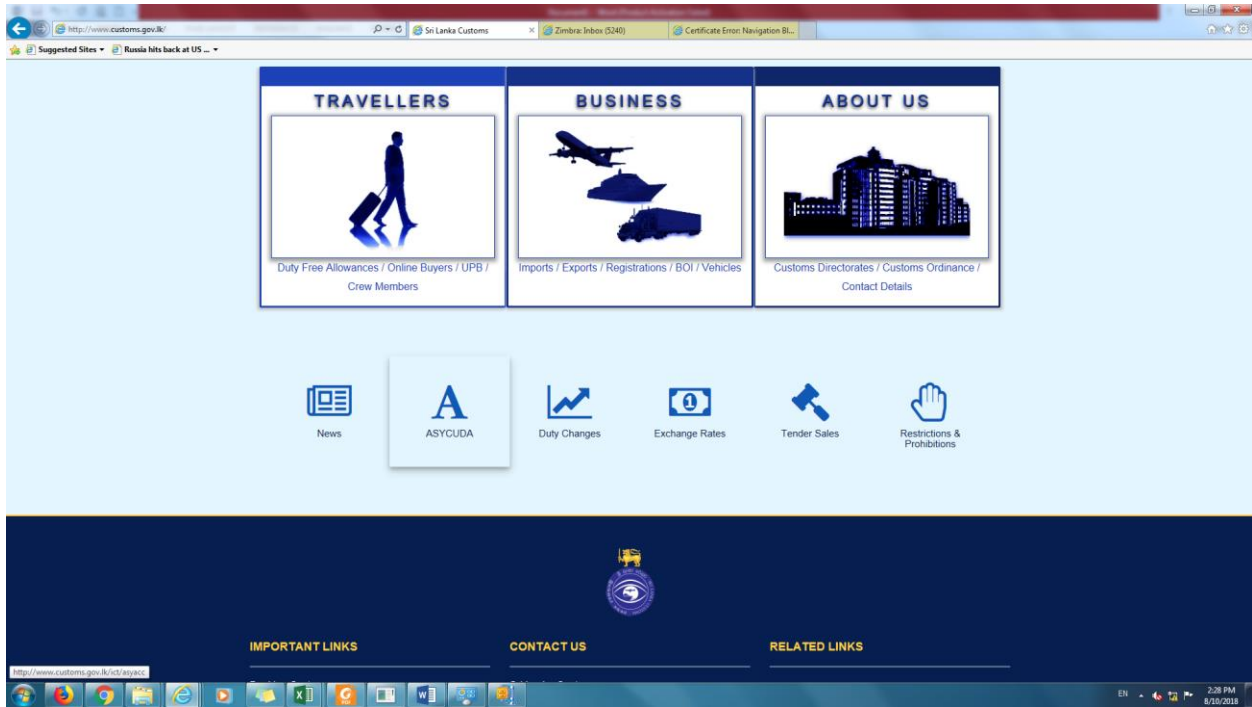
Click "Next" to install the java.

Then the java 6 update 17 will be installed.

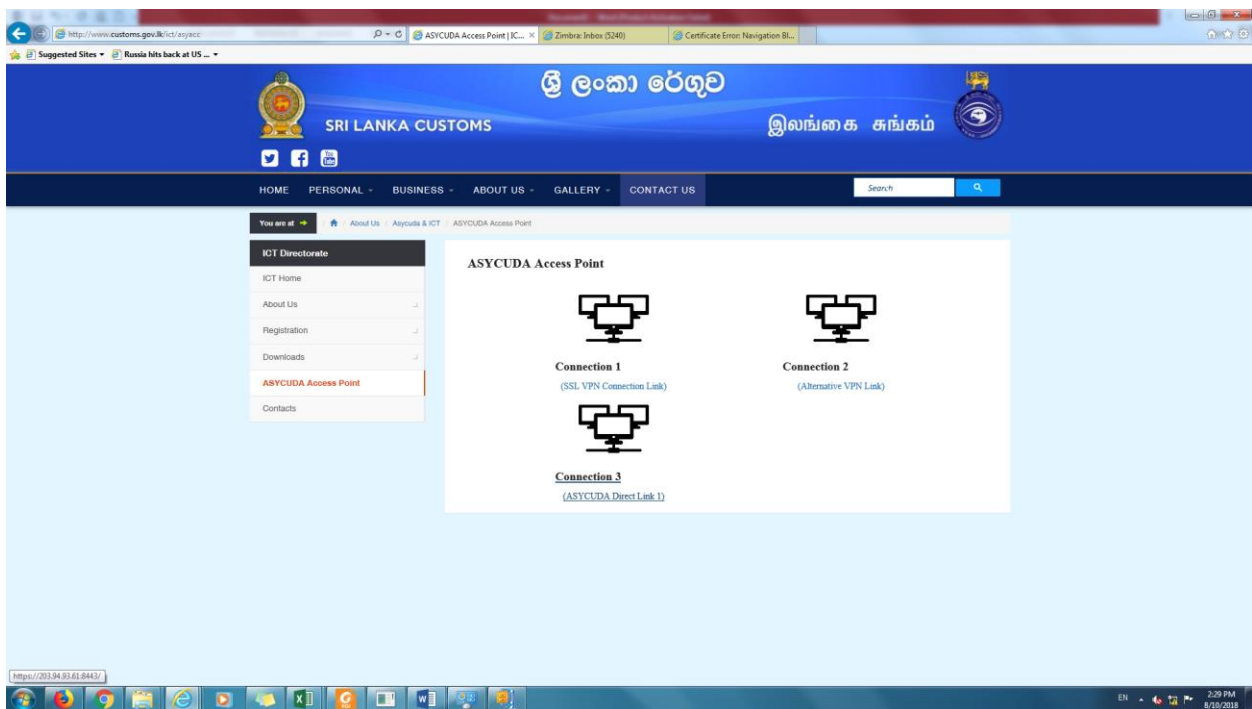
At the end click "Finish"

Step 2

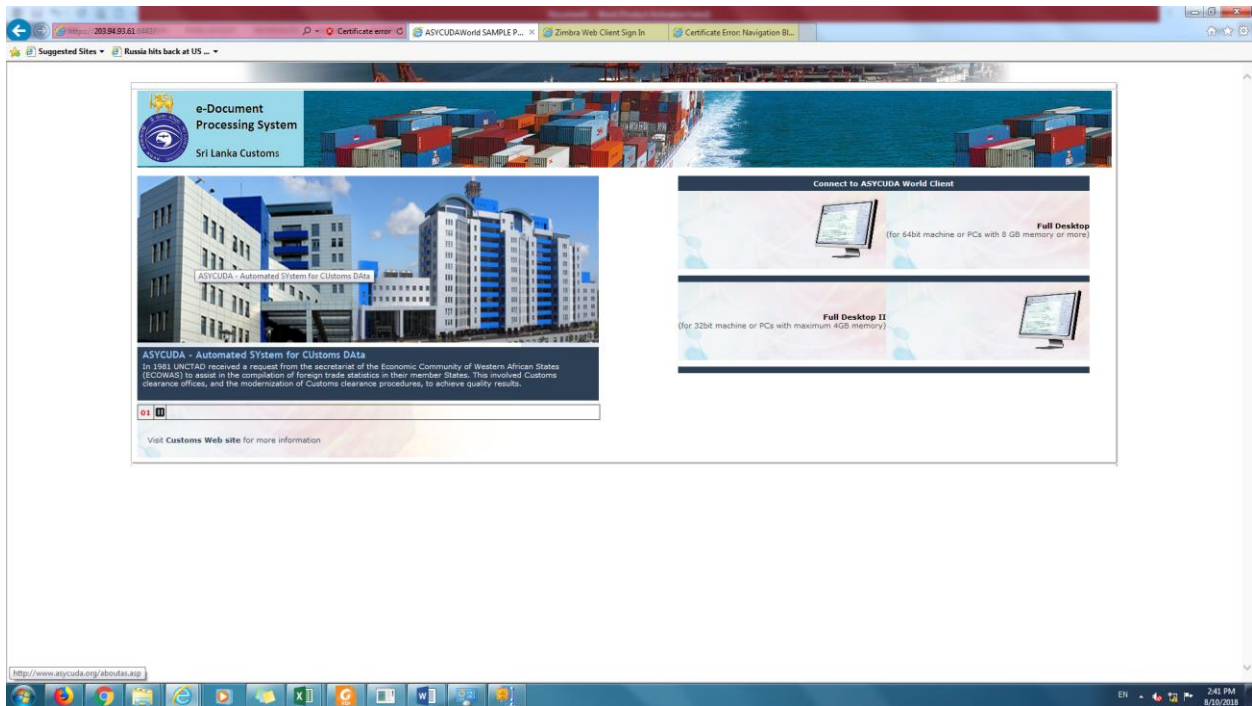
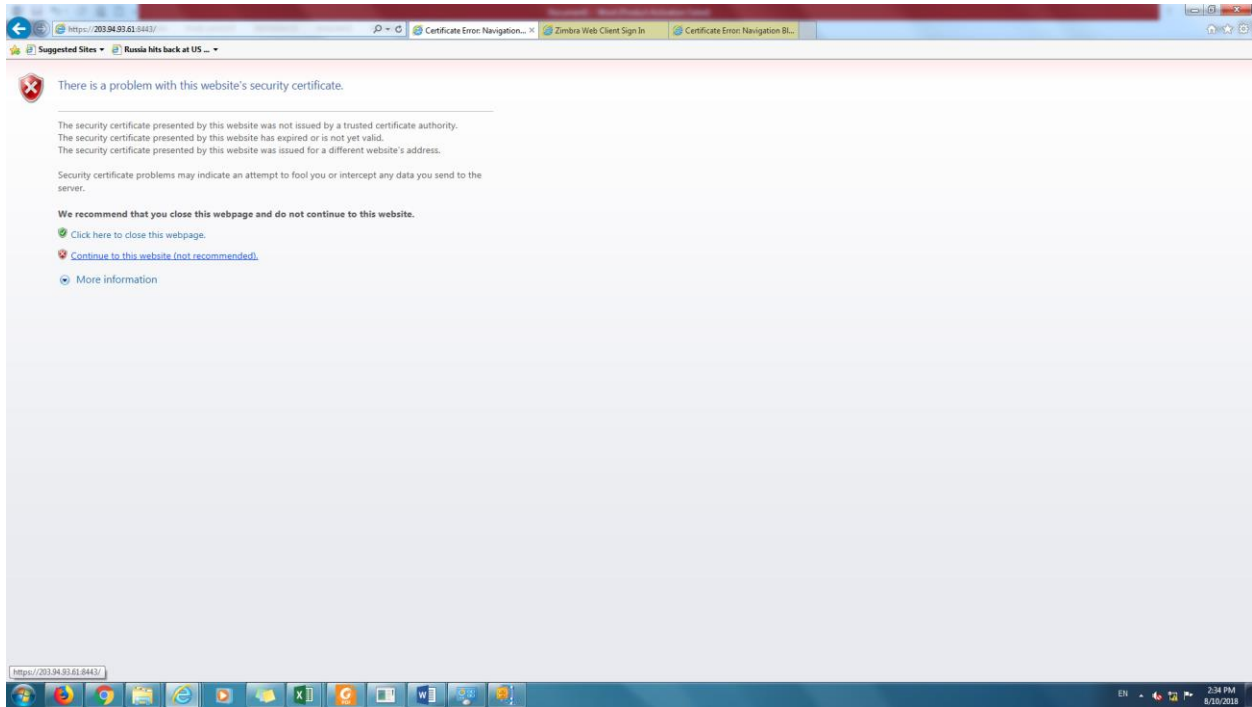
Now go back to the customs website and click on the big "A" ASYCUDA button



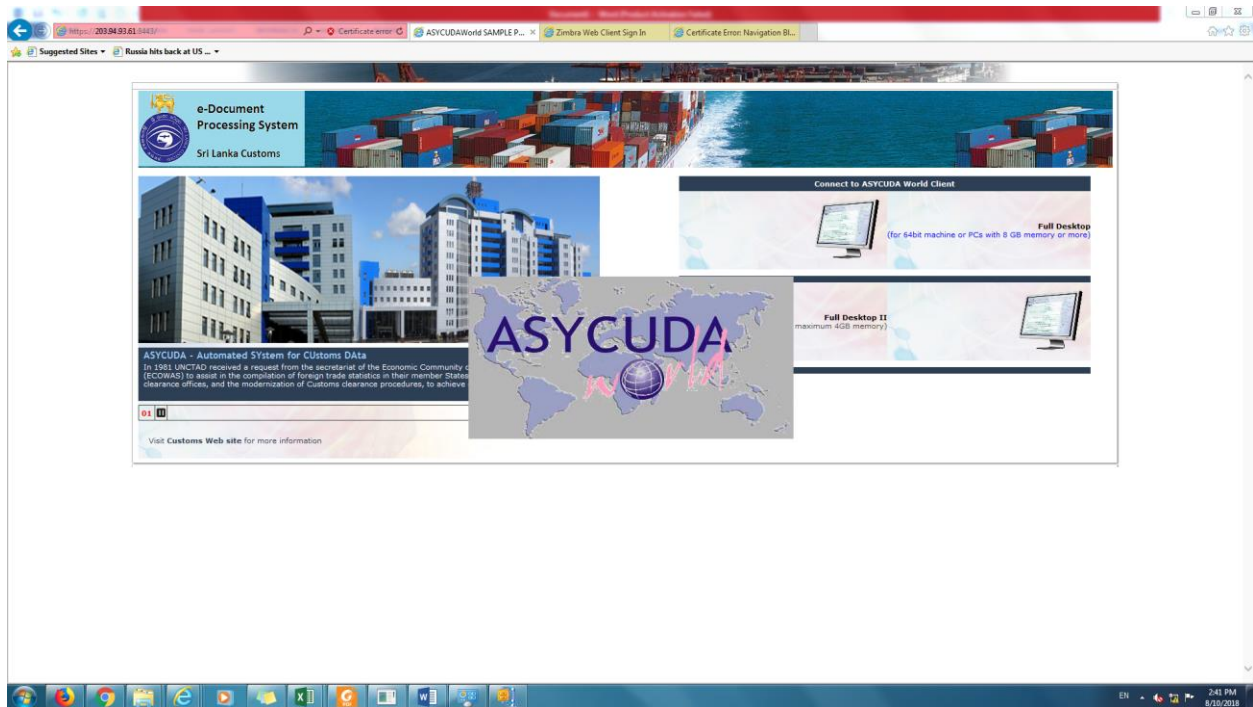
Click on Connection 3 Direct Link



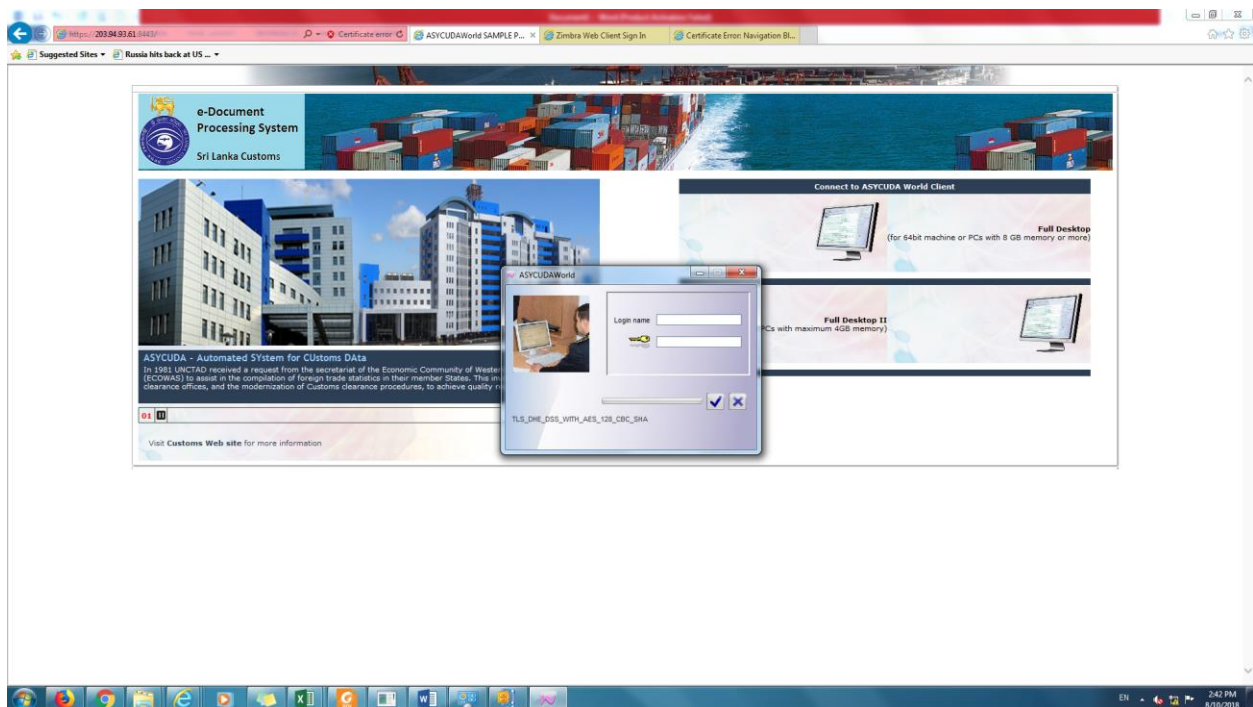
Click "Continue to this website (not recommended)"



Click on either desktop icon on the right side depending on your machine (32 bit or 64 bit)



Then the login screen will come



Enter your username(CHA5050) and password and click on the Right Mark

203.84.93.61:8443/

ASVCUDAWorld SAMPLE P... Zimbra Web Client Sign In Certificate Error Navigation BL...

Suggested Sites - Russia hits back at US ...

e-Document Processing System
Sri Lanka Customs

ASVCUDA - Automated System for Customs Data
In 1981 UNCTAD received a request from the secretariat of the Economic Community of West African States (ECOWAS) to assist in the compilation of foreign trade statistics in their member States. This in turn led to the modernization of Customs clearance procedures, to achieve quality...

Visit [Customs Web site](#) for more information

ASVCUDAWorld

Log name: CHA5055

TLS_DHE_DSS_WITH_AES_128_CBC_SHA

Login

Connect to ASVCUDA World Client

Full Desktop
(for 64bit machine or PCs with 8 GB memory or more)

Full Desktop 11
(PCs with maximum 4GB memory)

2:45 PM 5/10/2018

ASVCUDAWorld - ADP4813

File View Window Help

Cover Page

Document library

- ASVCUDA
- International Forms
- Single Window
- System Administration
- System design
- Tool Board
- My Profile

ASVCUDAWorld

You have 11 unread messages.
Do you want to open the mailbox?

No

Document library

PAGE 9 of 3 288 WUWUWA SUP ENROLMENT (UNITED STATES)

2:46 PM 5/10/2018

Troubleshooting

Error	Solution
"Could not run the java Virtual Machine"	Please uninstall all the previous versions of java and install the java 6 update 17(32bit or 64bit depending on your operating system). Please don't update the java after installing when prompted
"Server Not Found"	Check that you have a valid internet connection or you have enough ram in your PC (4GB or more)