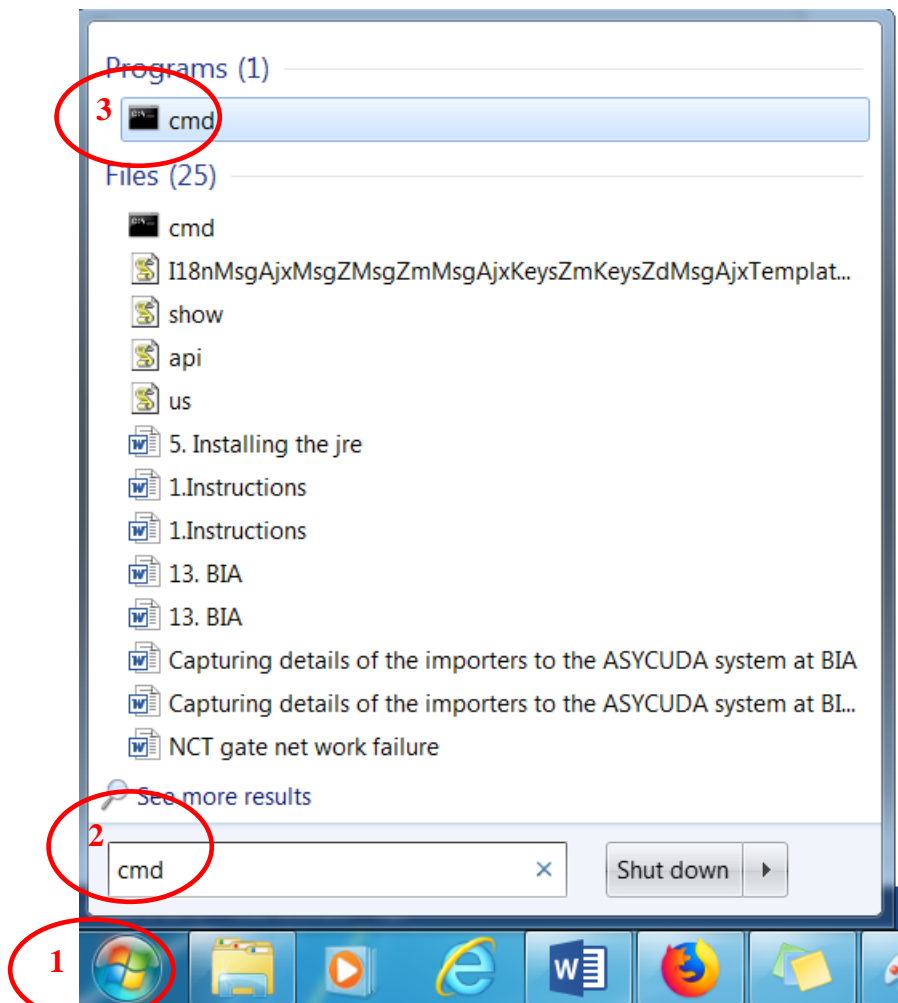


Special Notice for Traders and ASYCUDA World Users

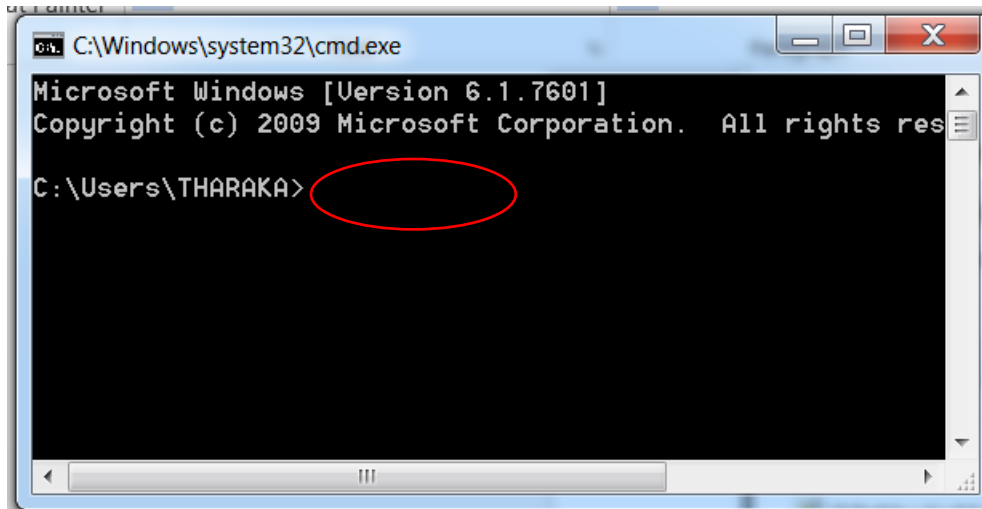
Sri Lanka Customs will upgrade its ASYCUDA World system shortly to provide the trade a better service. In this regard all ASYCUDA user machines java version should be upgraded to Java “1.8.0_151”. Therefore, all ASYCUDA users are hereby instructed to upgrade their Java version to “1.8.0_151”. How to do so is given below.

Check the current Java version

Click on the start button and type “cmd” on the finder. Next click on “cmd” as shown below (1,2,3).



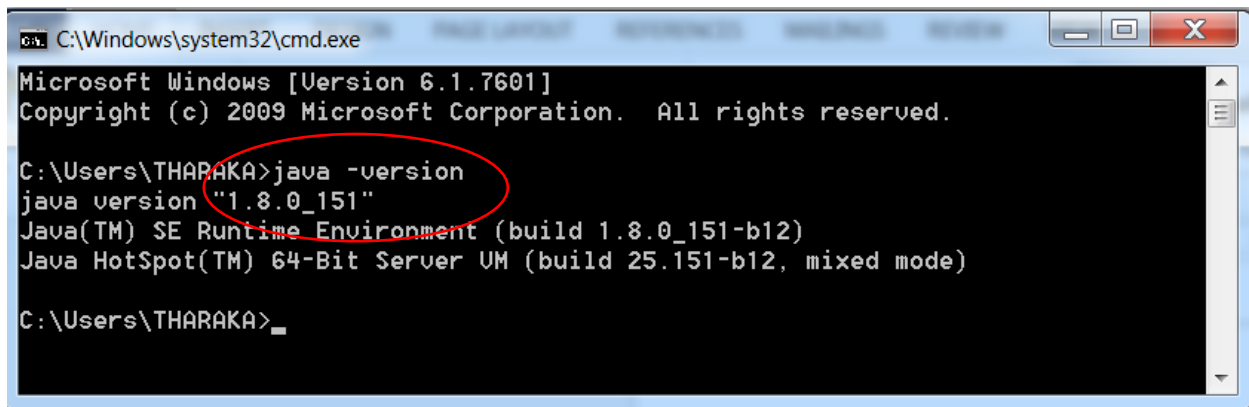
You will get the window shown below



```
C:\Windows\system32\cmd.exe
Microsoft Windows [Version 6.1.7601]
Copyright (c) 2009 Microsoft Corporation. All rights reserved.

C:\Users\THARAKA>
```

Type `java -version` as shown below and you will be able to know the current version. In this machine it has been upgraded to java version “1.8.0_151”. This is the correct version.



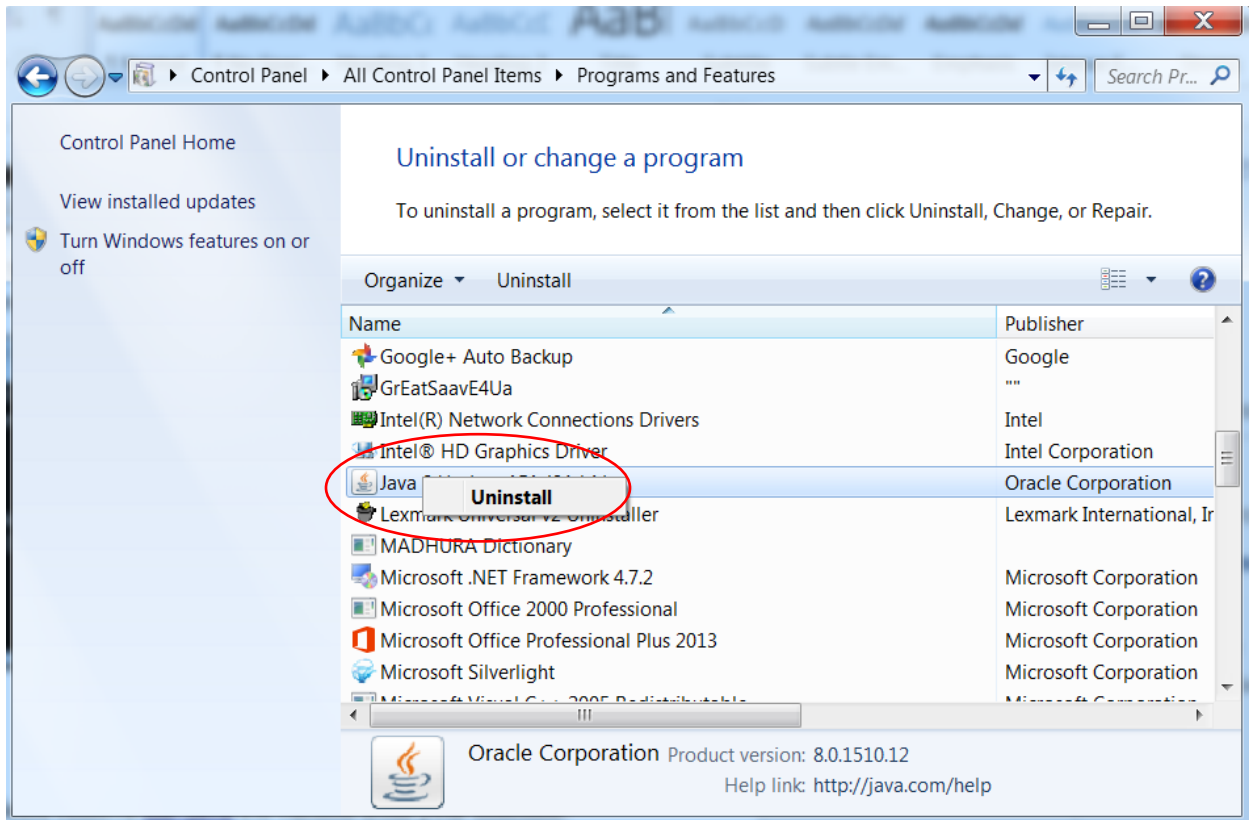
```
C:\Windows\system32\cmd.exe
Microsoft Windows [Version 6.1.7601]
Copyright (c) 2009 Microsoft Corporation. All rights reserved.

C:\Users\THARAKA>java -version
java version "1.8.0_151"
Java(TM) SE Runtime Environment (build 1.8.0_151-b12)
Java HotSpot(TM) 64-Bit Server VM (build 25.151-b12, mixed mode)

C:\Users\THARAKA>
```

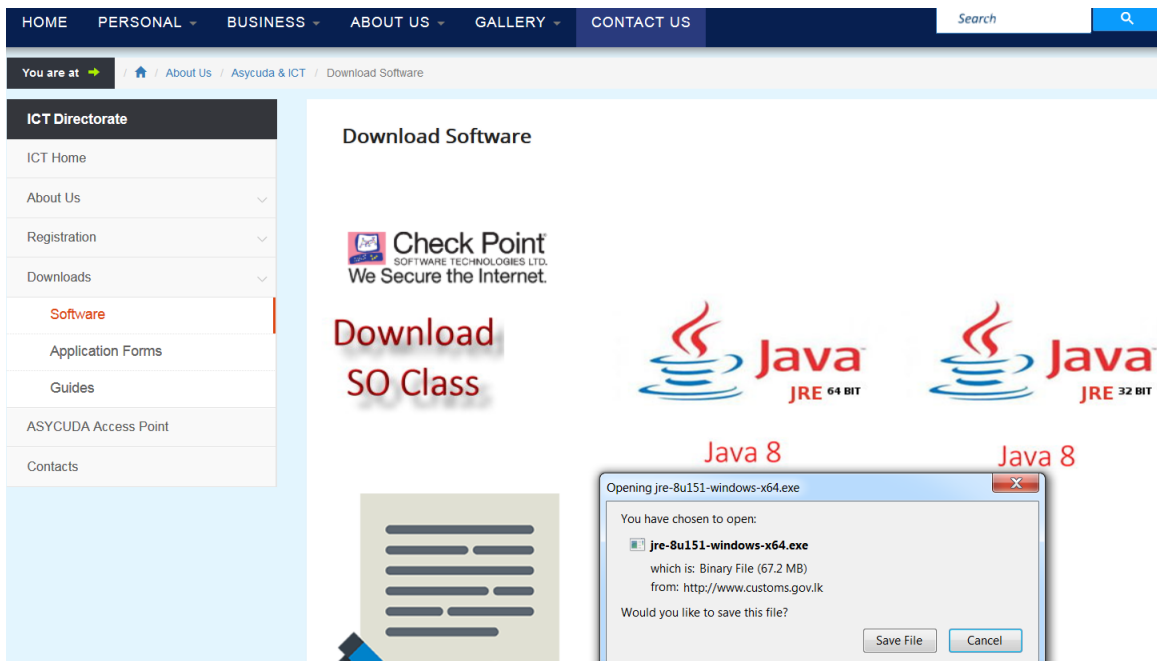
Uninstalling the old java version.

Before installing the new java version please remove the java 1.6 version from your machine. To do this please go to the Control Panel, Programs and features, java and click on “Uninstall”.



Installing the Java version “1.8.0_151”.

Visit Customs website and download the recommended java in to your machine by typing the following URL in your browser. http://www.customs.gov.lk/ict/download_software



Select the appropriate version, save the file and execute it to upgrade the java version

Installation of root and intermediate certificates

Download the Asycuda Certificate Installer through this link

<http://www.customs.gov.lk/public/files/ict/downloads/Asycuda-Certificate-Installer.exe>

(or go to www.customs.gov.lk -> ASYCUDA -> Downloads -> Software -> Download Asycuda Certificate Installer)

Once downloaded double click the setup file and install the application by following the on screen instructions.

Connecting AW Testing server - Make sure your computer is ready for ASYCUDA World upgrade

After you have finished Step 1 and 2 above, you can connect to the new ASYCUDA World testing server using following URL.

<http://10.2.61.45:8081/lkawclient/>

You can use your ASYCUDA World user name and password to connect to the testing server.

Submit a sample CusDec take the Assessment and CusDec printouts

Verify you can log in to existing ASYCUDA World System

After testing with the new Server you should connecting to existing AW Server because you have updated Java version from 1.6 to 1.8