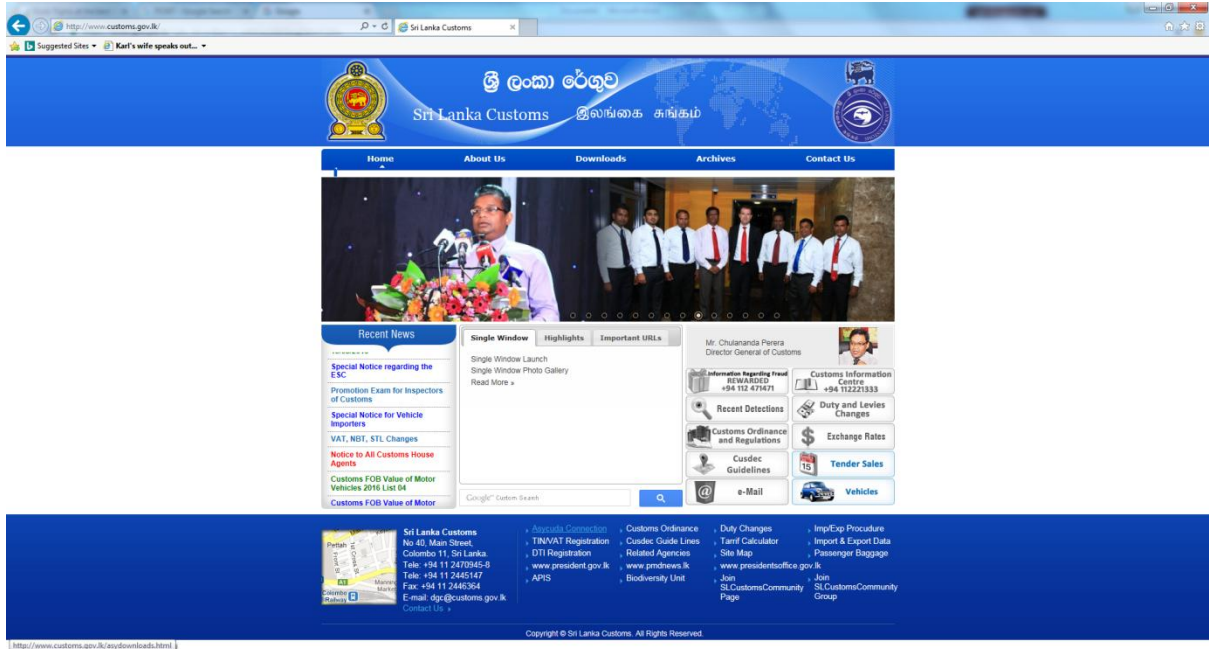
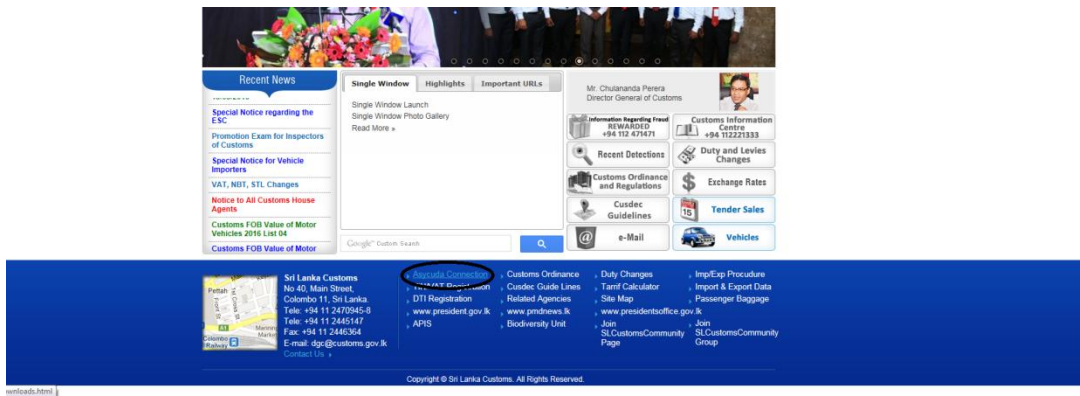


## HOW TO LOGIN TO ASYCUDA SYSTEM THROUGH THE INTERNET

Please open Internet Explorer and go to the customs website [www.customs.gov.lk](http://www.customs.gov.lk)



Then go to the link "Asycuda Connection" in the dark blue area below



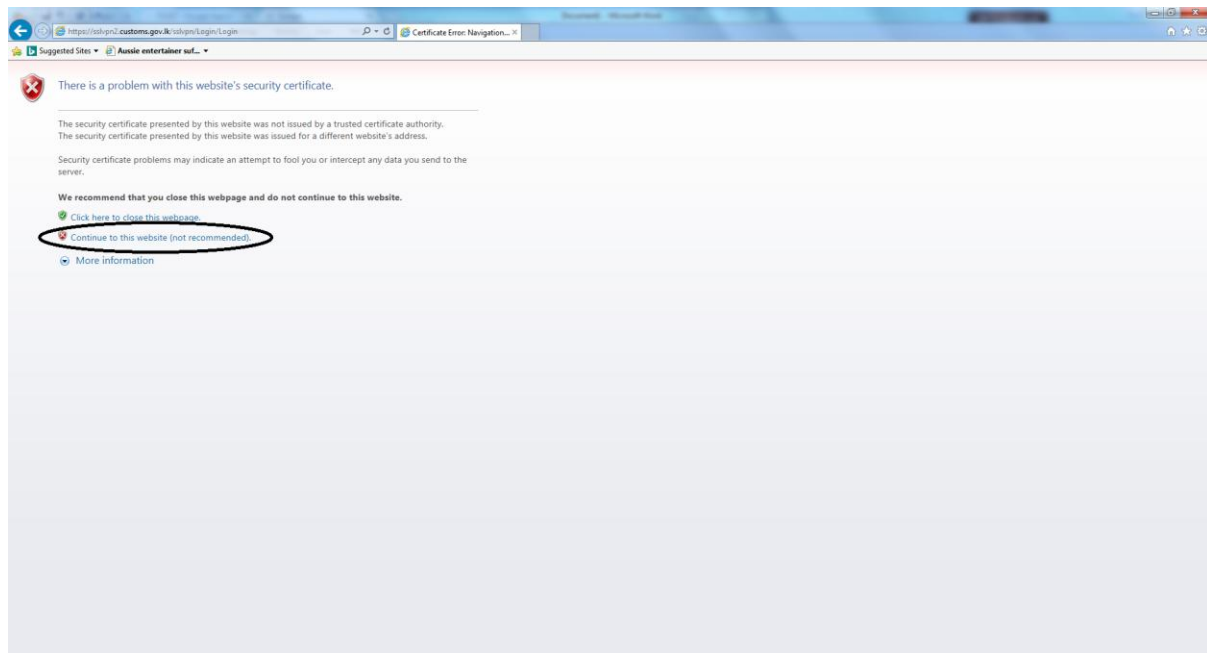
Then this screen will appear

Then Click the Link “SSL VPN Alternative Link”



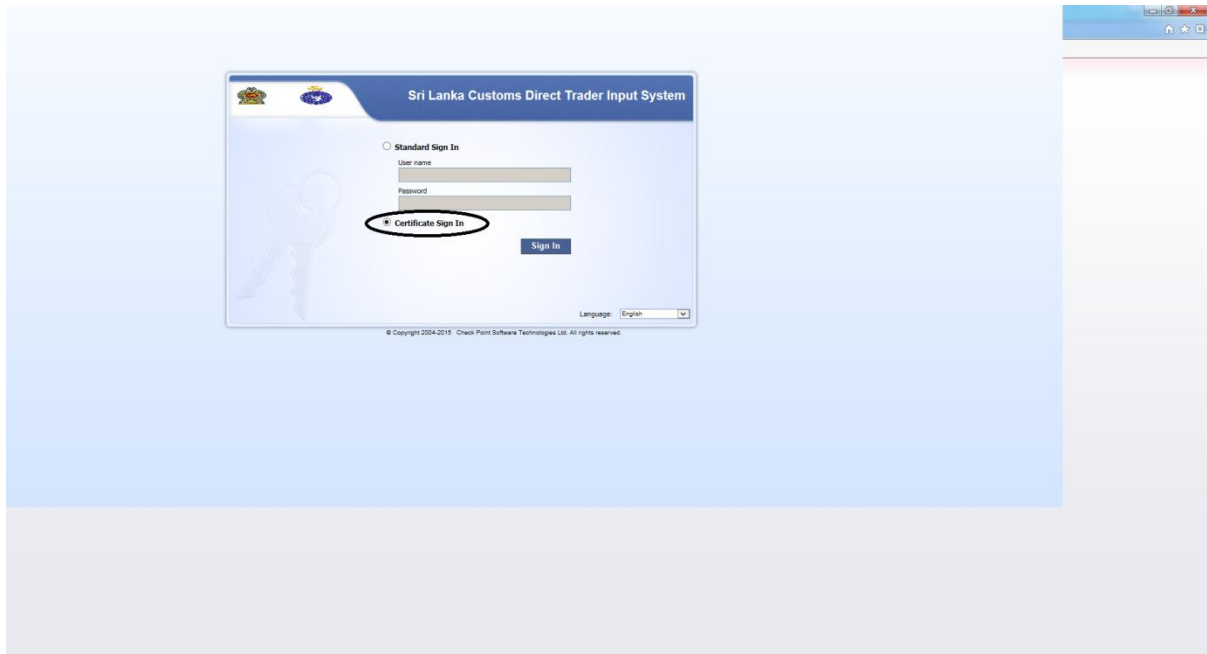
Then this screen will appear

Then Click the link “Continue to this website”



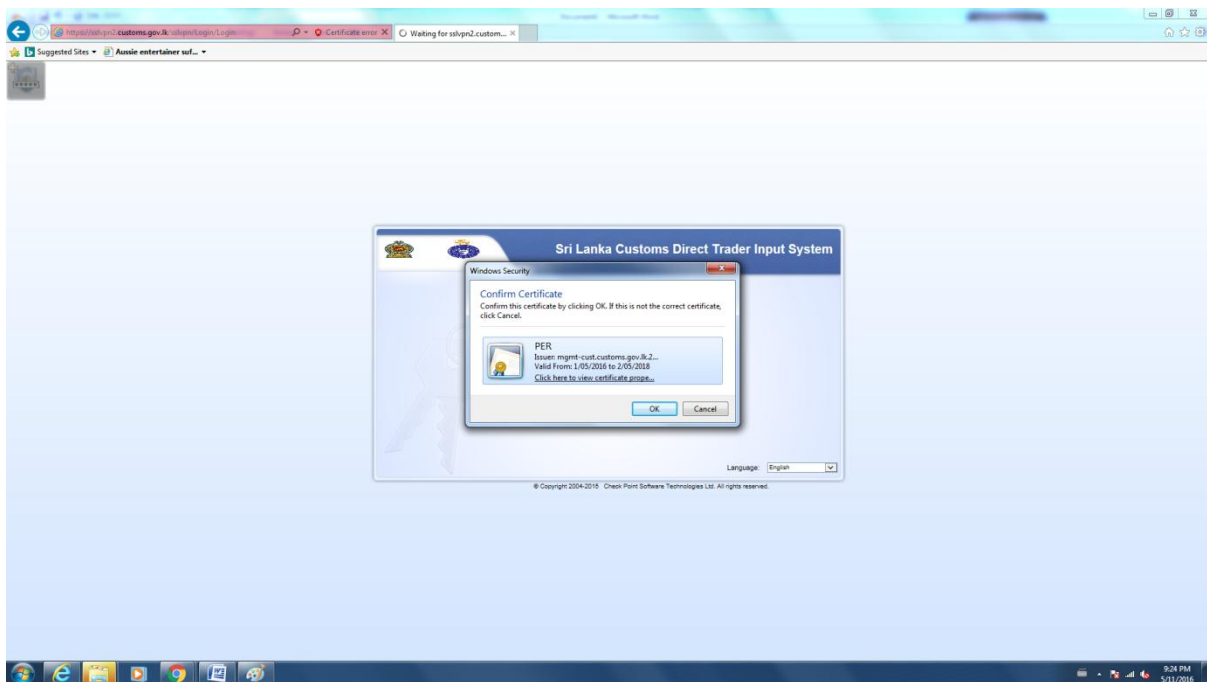
Then this screen will appear

Check(Select) the radio button "Certificate Sign In"



Then Click Sign In

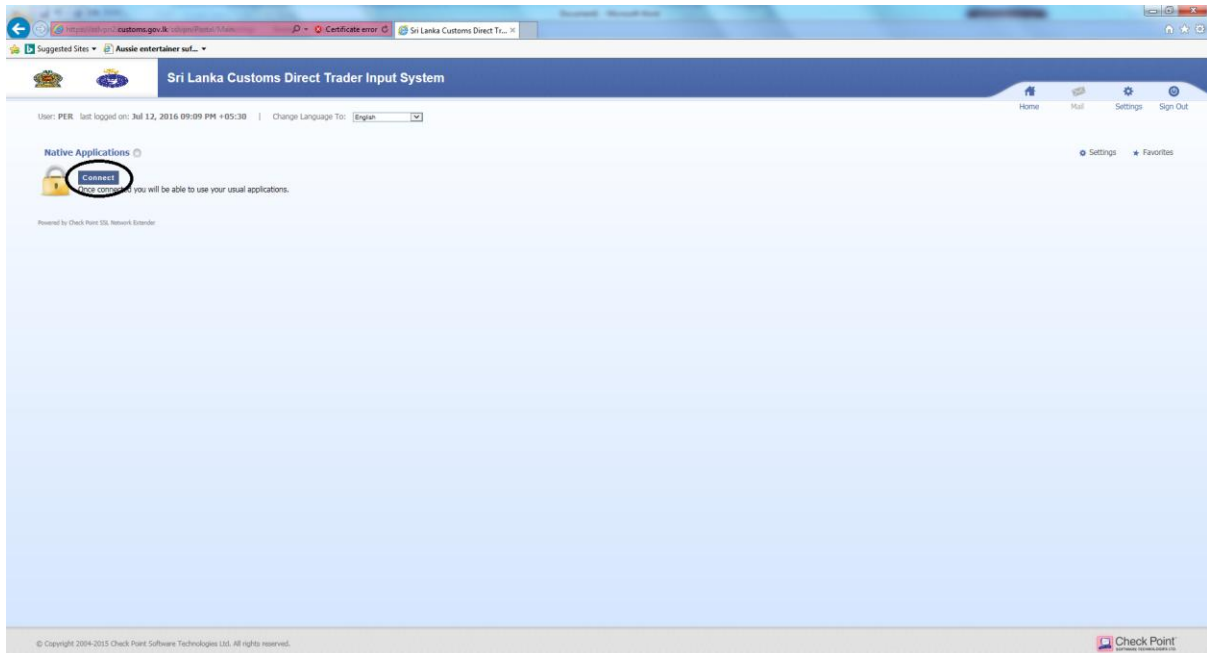
Then this screen will appear showing your vpn certificate



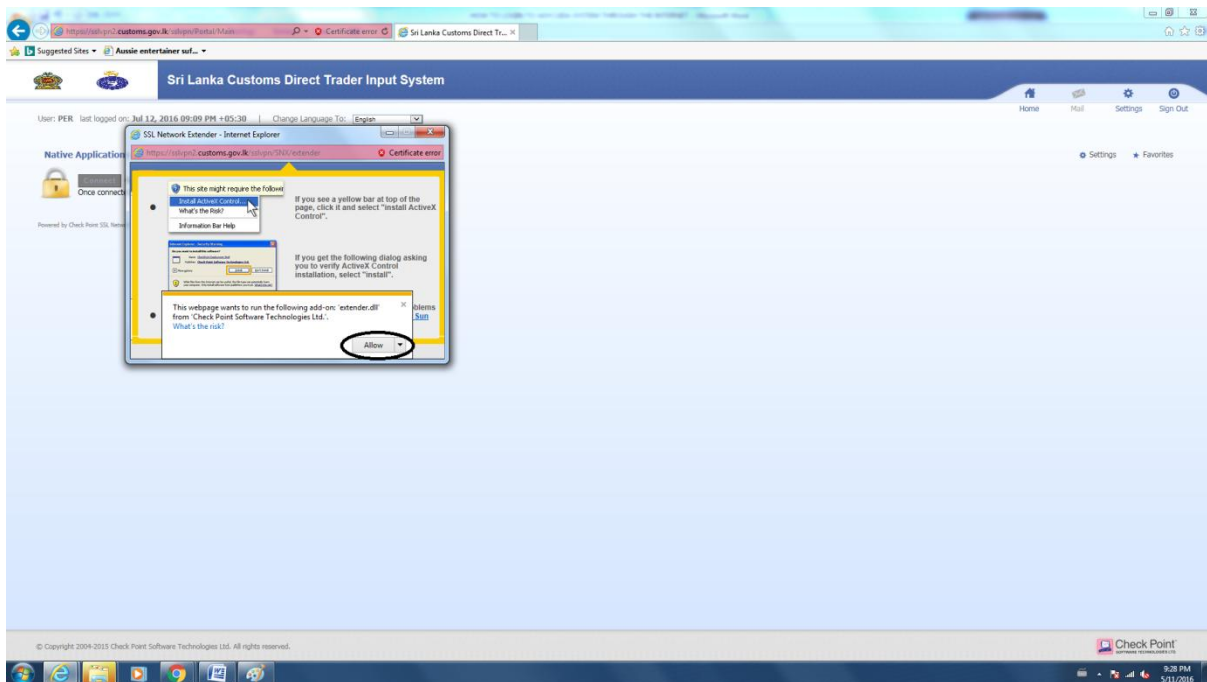
Then Click "OK"

Then this screen will appear

Click the button “Connect”

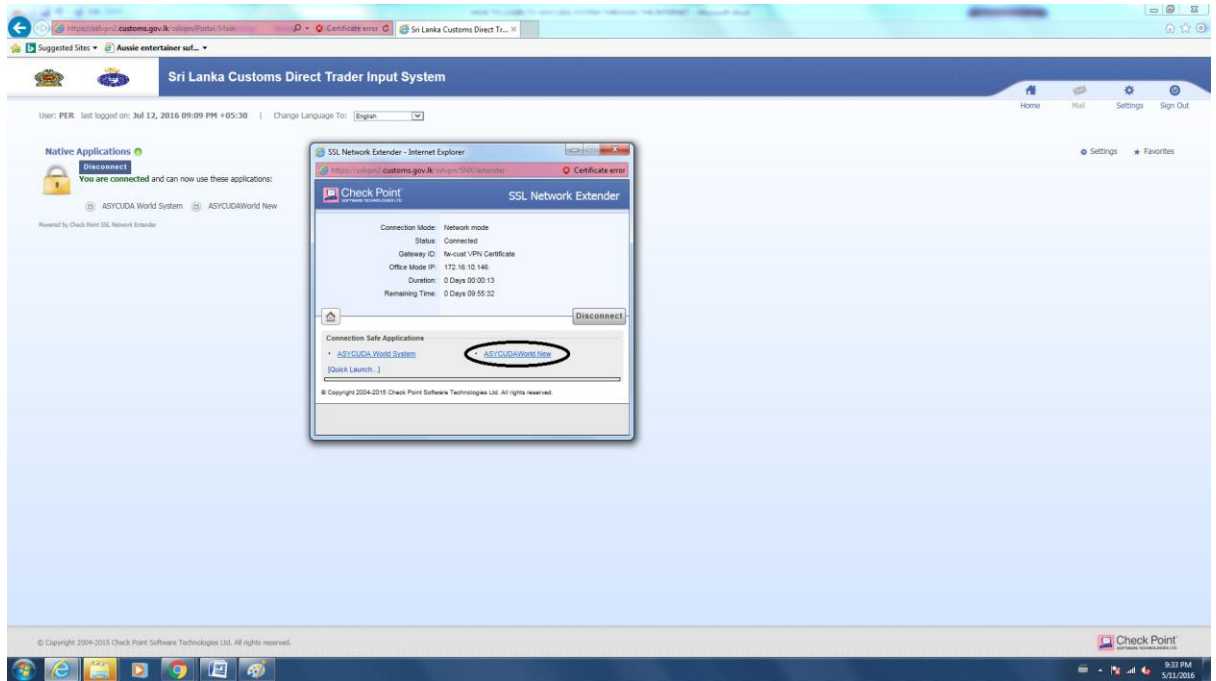


Then this screen will appear and Please click “Allow”

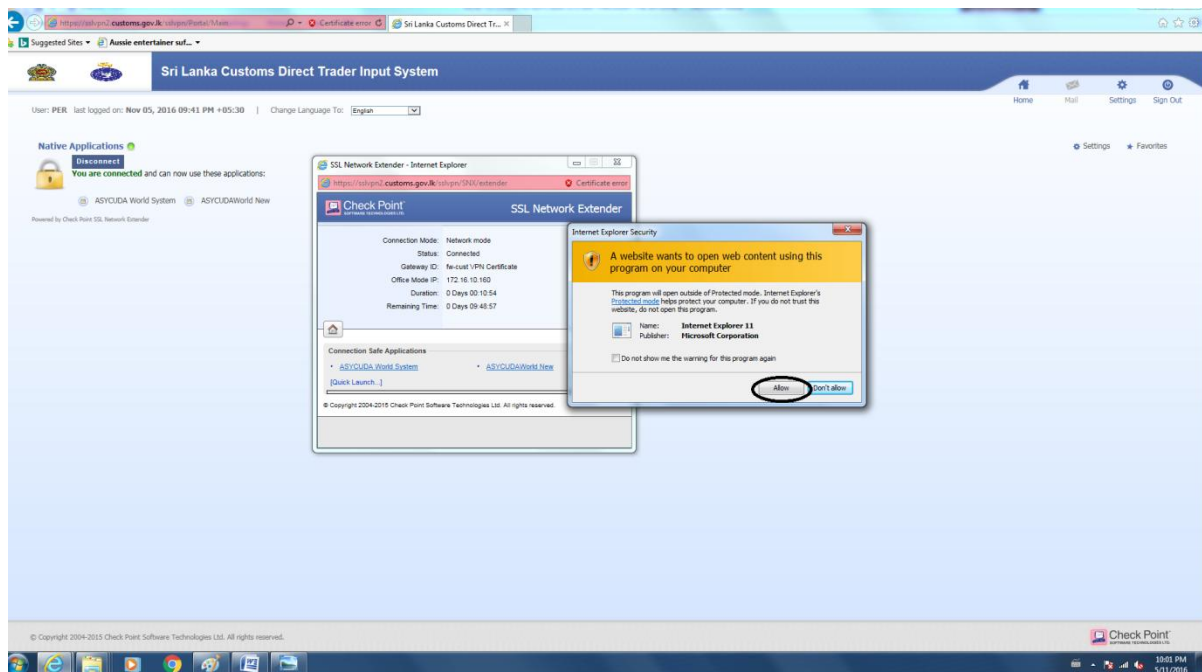


Then if a pop up message appears please click “Trust Server”

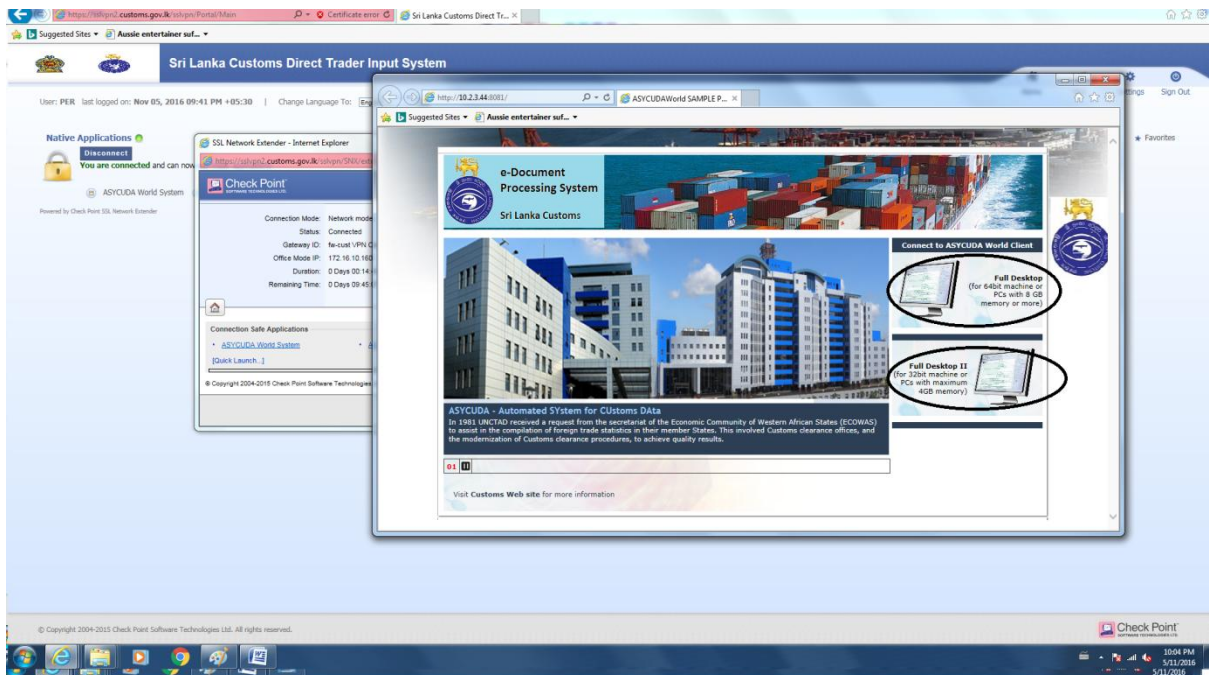
Then this screen will appear. Please click “ASYCUDA World New”



If a pop up message appears please click “Allow”



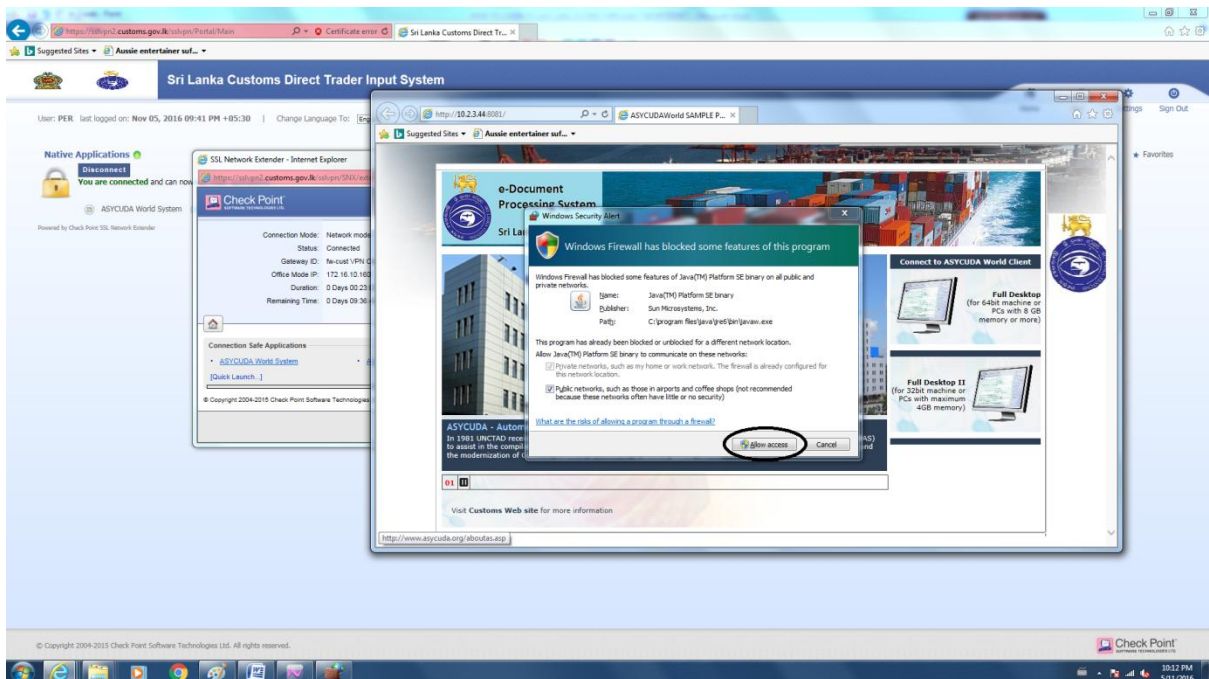
Then this screen will appear in a new window



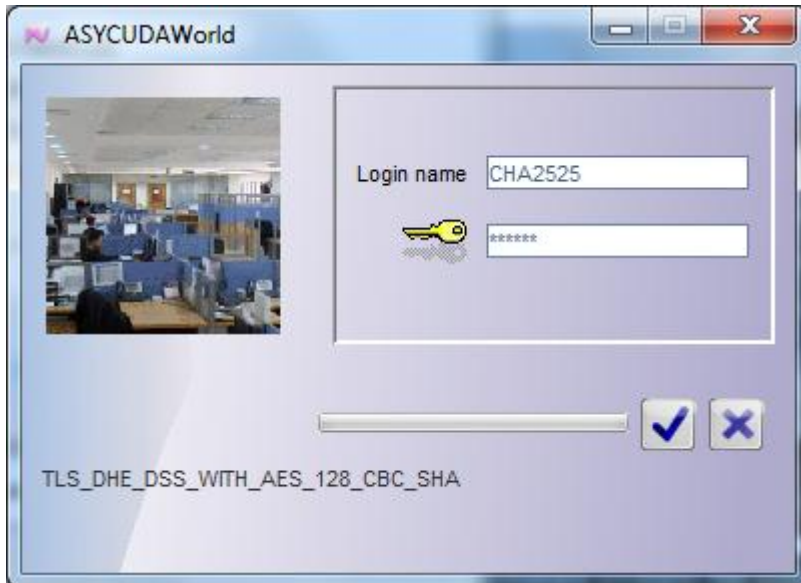
Please click “Full Desktop” or “Full Desktop II” depending on your operating system 64 bit or 32 bit respectively

Then the JNLP file will be downloaded and Click “Open” if a yellow pop up window appears below.

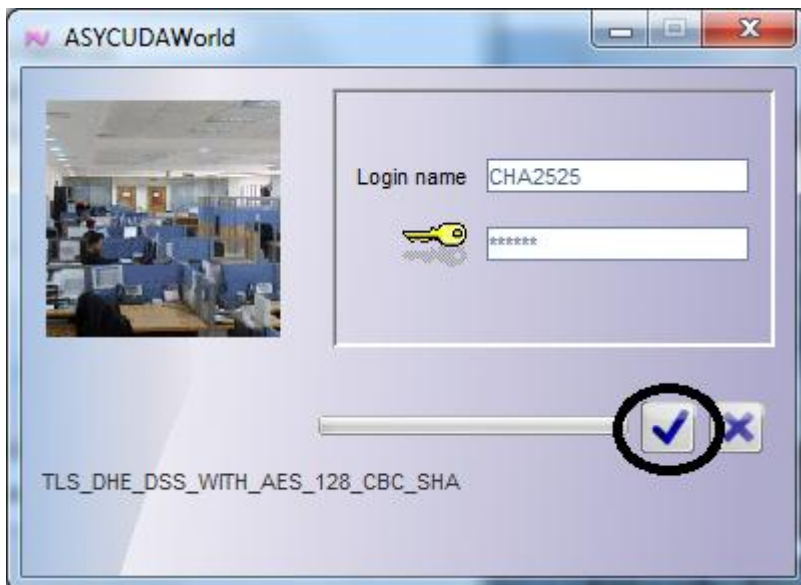
Then this screen will appear and Click “Allow access”



Then the Asycuda login screen will appear



Then type the username and password and Click the “Right Mark”



Then you will be logged into the system